



State Emergency Operations Center

## **2023 Spring Floods**

### **Incident Situation Report**

Date: May 15, 2023, Time: 1600 hrs.

SEOC Preparedness Level 3



Mission Road, Eagle, Yukon River, May 15, 2023

#### **Contact**

State Emergency Operations Center (SEOC) 907-428-7100

[seoc@alaska.gov](mailto:seoc@alaska.gov)

[2023.spring.floods@ready.alaska.gov](mailto:2023.spring.floods@ready.alaska.gov)

## State Emergency Operations Center (SEOC) Activated to Level 3

### Incident Overview

#### Timeline of Significant Events:

13 May 2023, Governor Mike Dunleavy issued a disaster declaration for the Alaska Gateway, Yukon Flats, Kuspuq, and Copper River REAAs due to flooding.

### Significant Operations

#### **YUKON DIVISION:**

##### **Eagle:**

5/13: The Yukon River began pushing significant chunks of ice onto Mission Road, blocking access between Eagle Village and Eagle City.

5/14: Water was reported to have receded, and DOT&PF crews have begun clearing debris to re-open the roadway. No reports of injuries or residential damage have been received.

5/15: Two homes near boat landing flooded, families evacuated. Taylor highway open. Debris clearing on Mission Road continues.

##### **Circle:**

5/13: At approximately 1900hrs, serious flooding was reported within Circle, with water levels exceeding previously reported records. The community took the local powerplant offline precautionarily, and community incident commanders established full accountability of community members.

5/14: The Yukon Division Supervisor landed in Circle and confirmed that significant inundation had resulted in damage to the school, post office, and multiple homes. Several homes were knocked off foundations due to ice chunks, and additional homes were swept into river and downstream. Tanana Chiefs Conference is in the process of sending additional generators and water to the community to provide support.

5/15: Washeteria damaged, sewage lagoon has been overtopped, the water well will need to be tested before being placed online, power to food freezers has been taken off-line. A FirstNet system is being deployed and food and water are being sent to the community. Attempt to restart school generator was not successful. AEA will deploy two generators. Fifteen homes downtown damaged and three more downriver. There are reports of power lines being down in several places. Fuel farm is inaccessible, and personal generators are running low on fuel.

##### **Fort Yukon:**

05/14: Some low-level flooding occurring. Water levels are slowly falling. Drinking water system has not been affected.

##### **Stevens Village:**

5/15: Flood Warning in effect – includes large ice. Village saw a 10 foot rise this morning. There is about 2 feet of freeboard on river bank.

#### **KUSKOKWIM DIVISION:**

##### **Red Devil:**

5/13: Water had inundated parts of the community and closed the airstrip. Kuskokwim Division Supervisor was able to contact the community by radio and confirmed there were no injuries within the community. The water level was reported to already be dropping. A full damage assessment is pending.

5/15: Water has receded from the runway but airport will remain closed until tomorrow morning.

##### **Crooked Creek:**

5/13: At approximately 1900hrs, serious flooding was reported within Crooked Creek. Some community members were reported to be unable to reach high ground and sheltered in the upper floor of the community store or homes. A shelter was opened at the community school for those able to reach it. Contact was lost with the community at approximately 0200hrs on 5/14 and foul weather prevented flights from reaching the community.

5/14: Early this morning the SEOC, along with the Kuskokwim Division Supervisor, Alaska State Troopers, the Alaska National Guard, and the JBER Rescue Coordination Center coordinated for an Alaska National Guard UH-60 Blackhawk helicopter from Bethel to fly over and conduct a life safety assessment. 12 people previously requesting assistance were safely located and taken to the school shelter location. Additionally, the SEOC and Donlin Gold coordinated for a mine-owned helicopter to overfly the community and drop off communications equipment including radios. As of noon on 5/14, water is reported to have dropped approximately 10' from its peak as the ice jam breaks up and moves downstream. A full assessment of damages is pending. Donated food boxes for 10 displaced residents for 3 days were delivered on May 14.

5/15: School generator is working. School resources are being used to feed the community and the school gym is being used for sheltering (4 elders and one child). One large family is being moved to teacher housing. The Kuskokwim School District (KSD) is providing clothing, shoes, and bedding. KSD can fly additional items in from Aniak if needed. Water has receded from airport surfaces but the runway is still very soft and will remain closed for a few more days. The airport is still without power. A Boil Water Notice is in effect. Full Community contingency sheltering is available at the Dolin Mine camp.

##### **Napaimute:**

5/14: The community contacted the Division Supervisor with concerns about possible impacts from the ice jam that previously inundated Crooked Creek. The community received a briefing via radio and has begun taking precautions including relocating many items further inland/uphill and establishing a rally point at the church. The Division Supervisor exchanged contact information with several members of the community and will remain in contact throughout the night should the anticipated flooding occur.

5/15: Community reported active flooding with sheltering in the city offices. 100% of residents have been accounted for. No damage reported. River Watch in contact with community via VHF radio.

**GLENNALLEN DIVISION:**

5/13: Snowmelt and ground saturation resulted in flooding within downtown Glennallen which impacted homes and businesses. Water levels have periodically receded, and the Department of Transportation & Public Facilities has crews on site monitoring the roadways. The Red Cross has deployed personnel to do preliminary damage assessments and provide bottled water and other supplies to support the community. The SEOC deployed a Division Supervisor today to coordinate with community Incident Command and assess damages.

5/14: 6 homes damage, sewer system compromised due to flood water, IGA store inundated and power to it has been shut off

5/15: Glenn Highway is open with pilot car support. Drainage structures fully open. Environmental concerns with fuel spills and sewage being addressed with ADEC.

---



**SEOC Operations Brief**





Daily at 0800 via Zoom. Contact SEOC for Zoom link.

**Please email the 2023 Spring Floods conference at**  
[2023.spring.floods@ready.alaska.gov](mailto:2023.spring.floods@ready.alaska.gov)

## Lifeline Status

 <p><b>Alaska Overall</b></p>	      
<p><b>Impacted Areas</b></p>	      

	<p><b>Food, Water, and Shelter</b></p>	
	 <p><b>Shelter</b></p>	<p><b>Crooked Creek:</b> 4 elders ,1 child are sheltered and 1 family went to teacher housing . 12 persons previously requesting rescue were picked up and taken to school shelter location. Multiple structures up to Brice laydown are submerged.</p> <p><b>Glennallen:</b> Red Cross confirmed 6 homes damaged, 4 remain unconfirmed with additional review planned.</p> <p><b>Circle:</b> 15 homes flooded, with 3 homes swept into river and downstream.</p> <p><b>Eagle:</b> 2 homes near the boat landing flooded, both families evacuated.</p> <p><b>Napaimute:</b> Residents are sheltering at city offices.</p>

	 <p><b>Water</b></p>	<p><b>Crooked Creek:</b> Boil water notice in effect due to low pressure from power outage. YKHC delivered bottled water and cleaning supplies to the community.</p> <p><b>Glennallen:</b> Sewer system compromised due to flood water.</p> <p><b>Circle:</b> Tanana Chiefs Conference sent approx. 40 pallets of water. Community waster system out of service</p>
	 <p><b>Food</b></p>	<p><b>Crooked Creek:</b> Water reported up to the 2<sup>nd</sup> floor of the community store. Donlin donated food for 10 displaced residents.</p> <p><b>Glennallen:</b> IGA store inundated with water to the power panel. Power turned off precautionarily.</p>
	<p><b>Health and Medical</b></p>	
	 <p><b>Medical Care</b></p>	<p><b>Circle:</b> Clinic remains open and available to receive patients. No water made it into the clinic building; however the clinic's backup generator was inundated and damaged. TCC working to repair / replace generator</p> <p><b>Eagle:</b> VPSO is engaged in contingency planning for medical emergencies due to impassable roads. Clinic remains available for patients.</p>



## Energy, Power, Fuel



### Power

**Crooked Creek:** Power is restored to the school by using generators. Power to the airport is not functioning.

**Circle:** Powerplant is offline. There are reports of power lines being down in several places. Tanana Chiefs Conference is sending generators to support. AEA and JEO deploying disaster generators to community within next 24 hours.



### Fuel

**Circle:** Fuel farm is inaccessible due to ice debris and personal generators are running low on fuel.



## Communications



### Communications Infrastructure

**Crooked Creek:** Donlin Gold provided communication equipment and are active. Community is actively trying to restore regular communications.

**Circle:** Public Safety entity issues with no coverage. A FirstNET SatCOLT is being dispatched to support public safety communications.



## Transportation



## Airfields/Airports

**Crooked Creek:** Runway is clear of water, though had been overtopped previously. NOTAM issued for soft gravel. North 1000' is very soft and closed until tomorrow at the earliest.

**Red Devil:** Water on runway previously prevented landing by Riverwatch team but has since receded. NOTAM in effect – runway 10/28 is closed until 1000 Tuesday for soft gravel.



## Roadways

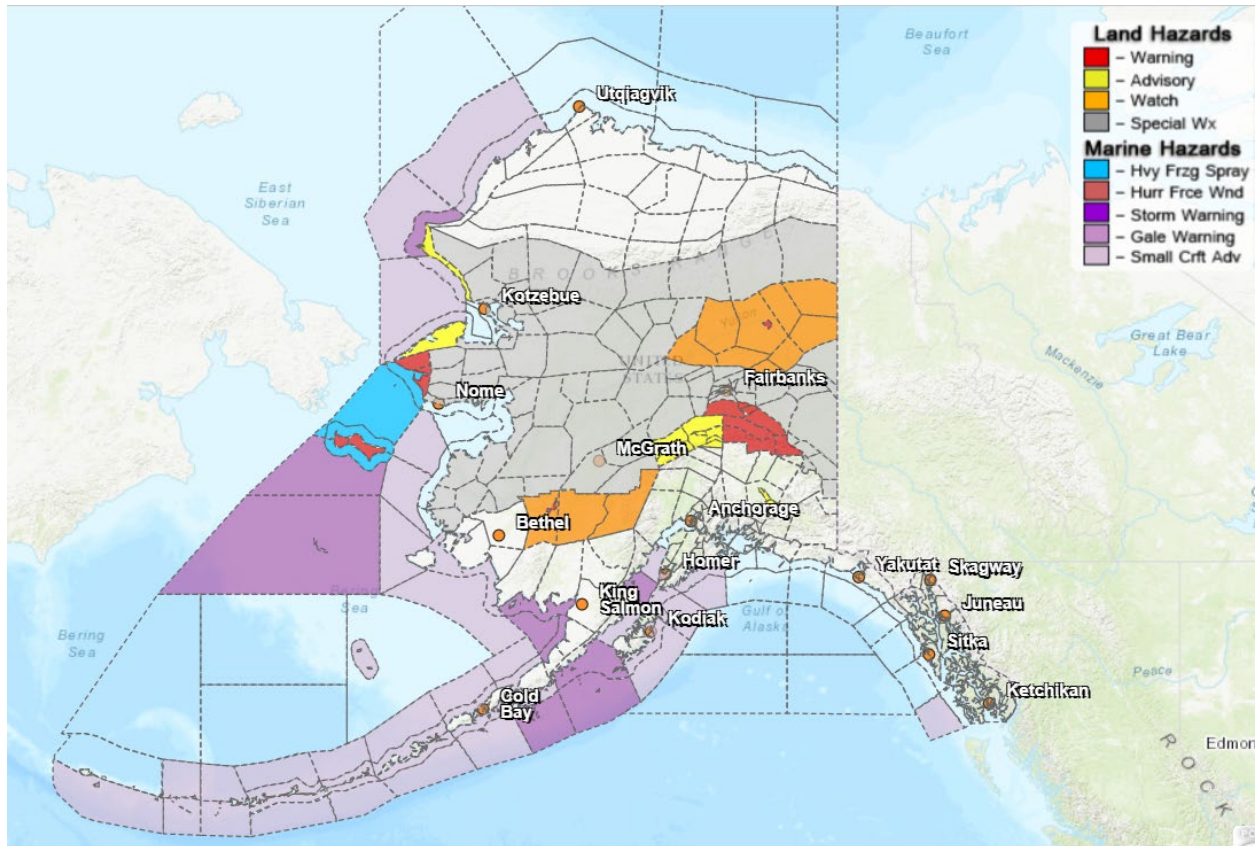
**Glennallen:** Glenn Highway is overtopped approx. 1 foot in town. Road remains open with DOT&PF flagging and pilot car operating.

**Circle:** Steese Highway was overtopped near entrance to town. Photos show road is open with one dry lane.

**Eagle:** Significant ice chunks are on road between Eagle City and Village. DOT&PF is engaged. Mission Road is no longer flooded, and DOT&PF crews are clearing debris with estimated completion no later than end of today. Taylor Highway is open.



## Weather Forecast



## Helpful Links

Alaska Division of Homeland Security and Emergency Management (DHSEM)

<http://ready.alaska.gov/>

National Weather Service: Alaska Forecast Center

<https://www.weather.gov/alaska/>

Alaska-Pacific River Forecast Center: River Breakup Map

<https://www.weather.gov/aprfc/>